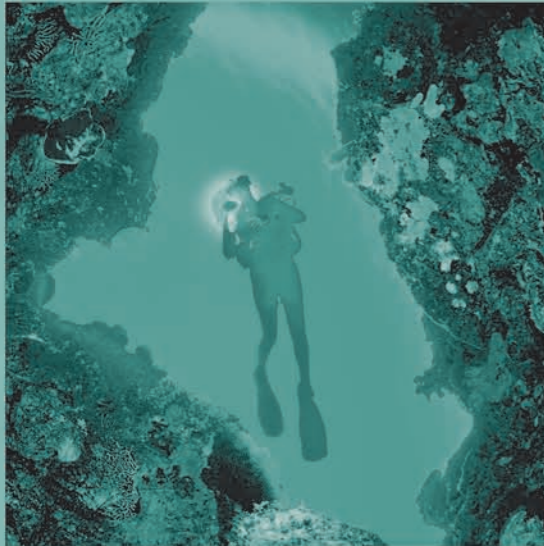


SCUBA



Technical Specifications

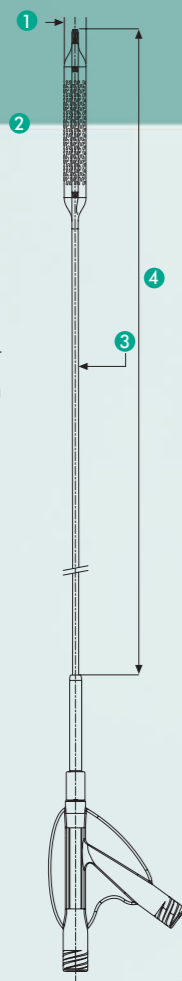
Stent

Range of diameter	5 - 10 mm
Range of lengths	18, 30, 37, 55, 75 mm
Stent design	Laser slotted, closed cell
Stent material	Cobalt Chromium
Strut thickness	120 μm (ø 5-7 mm) 152 μm (ø 8-10 mm)

Stent Delivery System

Catheter design	Over the wire, dual lumen shaft
Guidewire compatibility	0.035"
Balloon material	FLEXITEC™ Xtreme
Usable shaft length	80, 130 cm
Shaft diameter	5F

1 French (F) = 0.333 mm - 1 inch (") = 25.4 mm



- 1 Stent inner Diameter
- 2 Stent Nominal Length
- 3 Shaft Diameter
- 4 Usable Shaft Length

Ref. N° Usable length 80 cm	Ref. N° Usable length 130 cm	Stent Inner Ø (mm)	Stent Length (mm)	Recom. Introducer Sheath (F)	Nominal Pressure (bar)	RBP (bar)
SCA 050 018 080	SCA 050 018 130	5	18	6	9	17
SCA 050 030 080	SCA 050 030 130	5	30	6	9	17
SCA 050 037 080	SCA 050 037 130	5	37	6	9	17
SCA 050 055 080	SCA 050 055 130	5	55	6	9	17
SCA 060 018 080	SCA 060 018 130	6	18	6	9	17
SCA 060 030 080	SCA 060 030 130	6	30	6	9	17
SCA 060 037 080	SCA 060 037 130	6	37	6	9	17
SCA 060 055 080	SCA 060 055 130	6	55	6	9	17
SCA 070 018 080	SCA 070 018 130	7	18	6	9	15
SCA 070 030 080	SCA 070 030 130	7	30	6	9	15
SCA 070 037 080	SCA 070 037 130	7	37	6	9	15
SCA 070 055 080	SCA 070 055 130	7	55	6	9	15
SCA 070 075 080	SCA 070 075 130	7	75	6	9	15
SCA 080 018 080	SCA 080 018 130	8	18	6	9	13
SCA 080 030 080	SCA 080 030 130	8	30	6	9	13
SCA 080 037 080	SCA 080 037 130	8	37	6	9	13
SCA 080 055 080	SCA 080 055 130	8	55	6	9	12
SCA 080 075 080	SCA 080 075 130	8	75	6	9	12
SCA 090 018 080	SCA 090 018 130	9	18	6	9	13
SCA 090 030 080	SCA 090 030 130	9	30	6	9	13
SCA 090 037 080	SCA 090 037 130	9	37	6	9	13
SCA 090 055 080	SCA 090 055 130	9	55	6	9	13
SCA 100 030 080	SCA 100 030 130	10	30	7	8	12
SCA 100 037 080	SCA 100 037 130	10	37	7	8	12

INVATEC
Innovative Technologies

Under continuous product development program, Invatec reserves the right to modify specifications without prior notice.



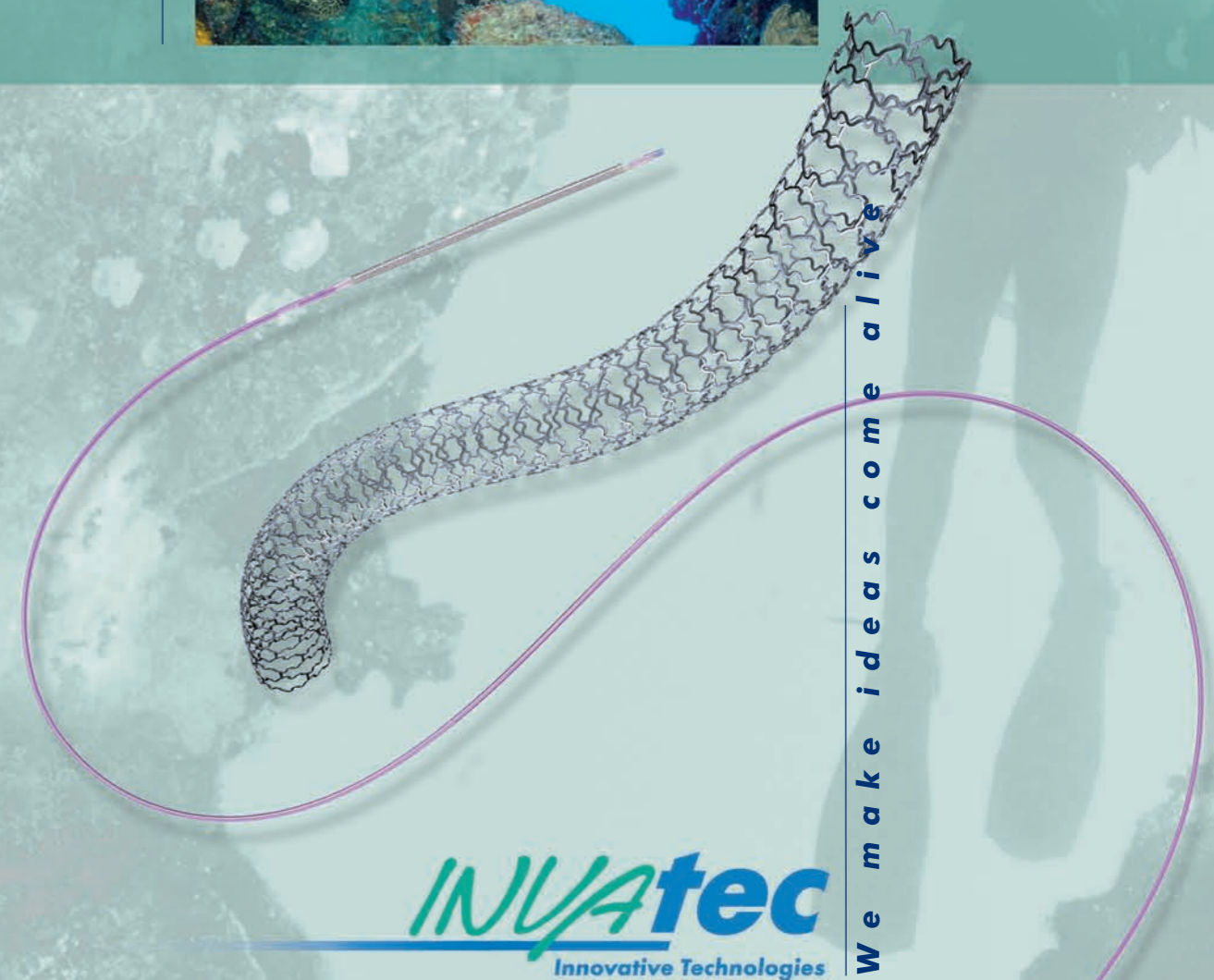
ISO 9001:2000 & EN ISO 13485:2003 Certified

SCUBA



Co-Cr Peripheral Stent System

The first 5F Co-Cr Peripheral Stent System



INVATEC
Innovative Technologies

We make ideas come alive

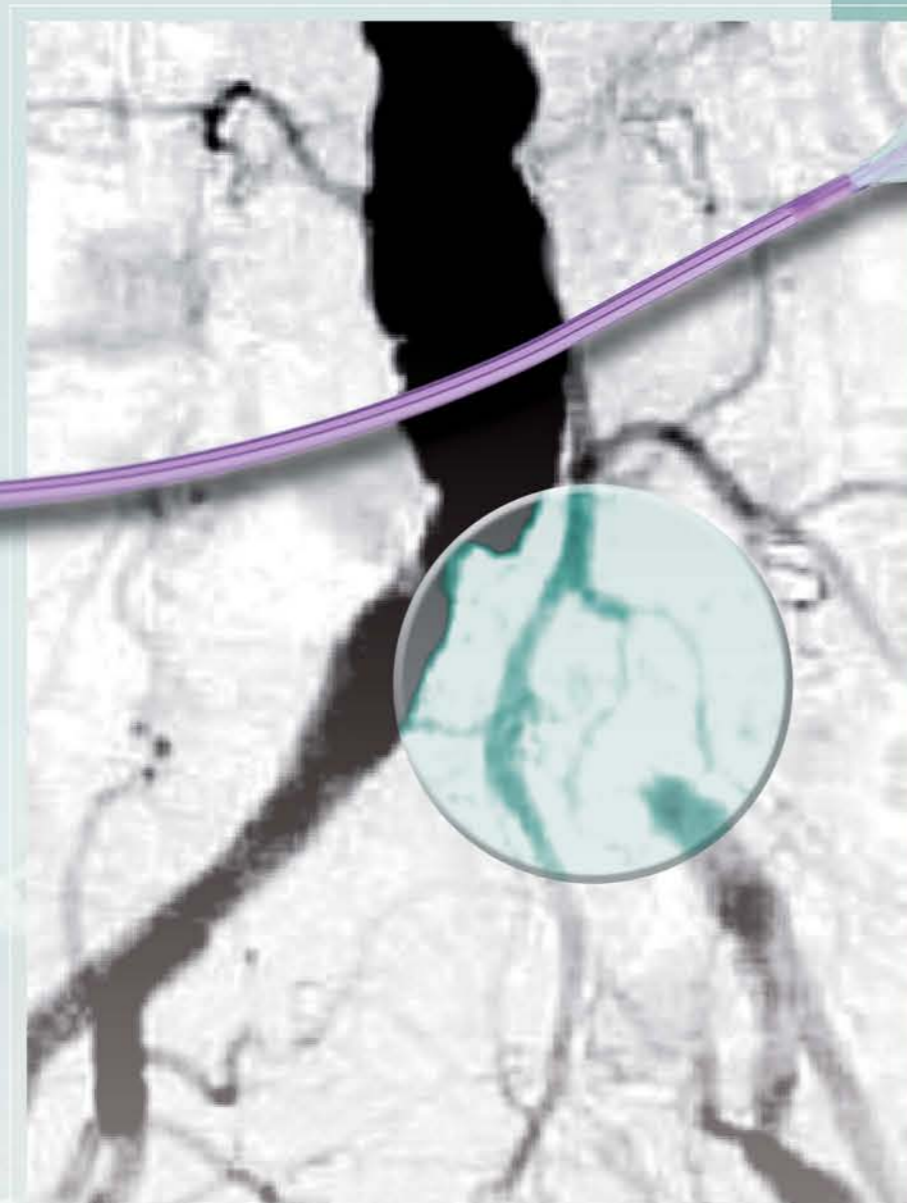
SCUBA

**Co-Cr Peripheral
Stent System**

**On the cutting edge
of flexibility and strength**

First Cobalt Chromium Peripheral Stent System

for unlimited deliverability and
flexibility in contralateral approaches



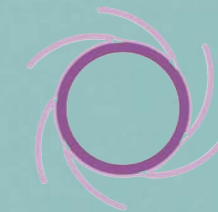
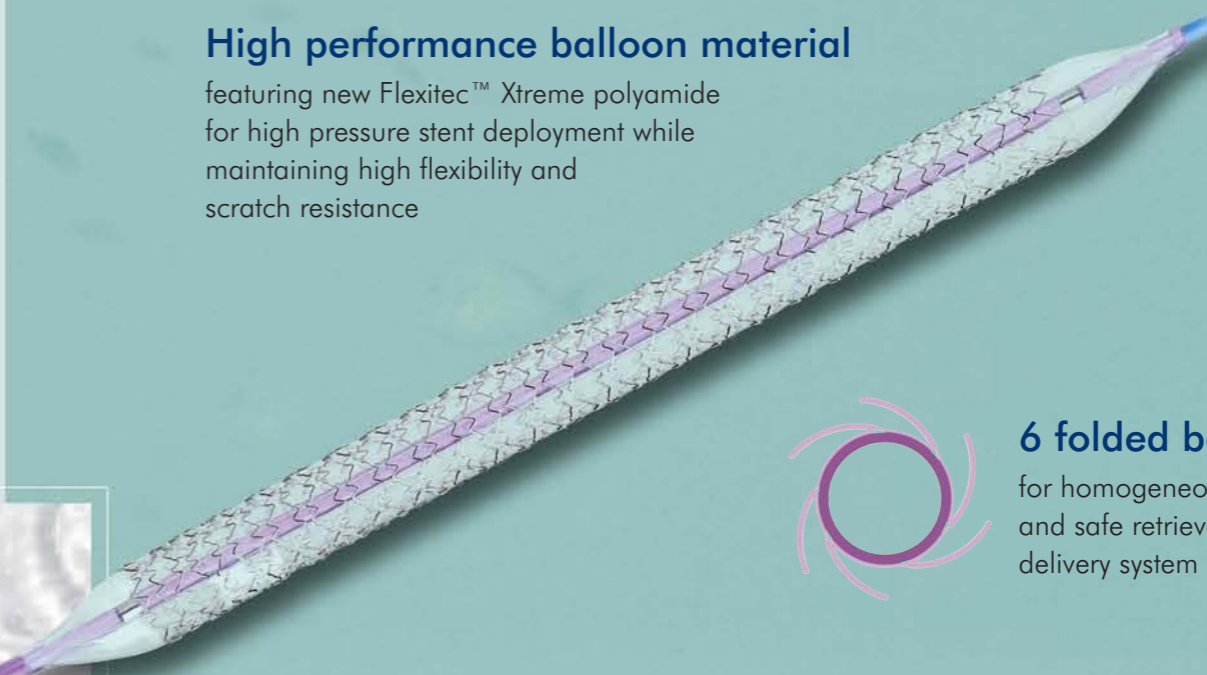
Novel dual lumen shaft design

awards to the device with an enhanced
pushability and kink resistance, combined
with excellent flexibility, for contralateral
maneuvers and large inflation lumen for
fast deflation times

“It has never been easier to get around the “horn”
with a balloon-expandable stent”

High performance balloon material

featuring new Flexitec™ Xtreme polyamide
for high pressure stent deployment while
maintaining high flexibility and
scratch resistance



6 folded balloon

for homogeneous stent deployment
and safe retrieval of the
delivery system

Closed Cell Design

for tight, predictable scaffolding
and appropriate radial force
in Iliac lesions



Zero-Shortening

of the proprietary stent design enables
precise stent positioning