

Pressure & Flow Measurements in One Easy-to-Use System



Features and Benefits

- Great flexibility; quick and easy basic mode to highly sophisticated research modes
- One combined system for simultaneous pressure and flow measurements
- PC-based, lightweight and mobile
- High-resolution LCD touchscreen user interface with separate remote control
- Compatible with all major physiological recording systems
- Archive your data to CD-R or screenshots to a USB drive

Technical Specifications

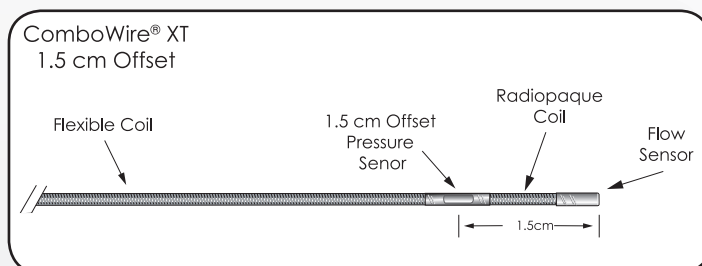
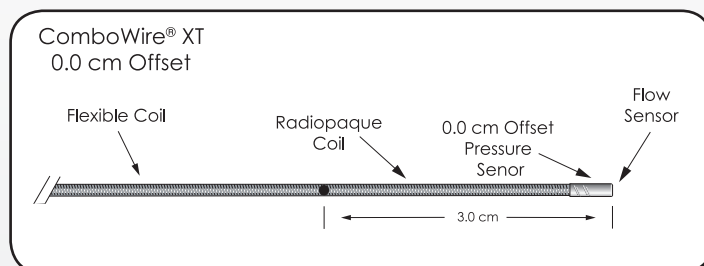
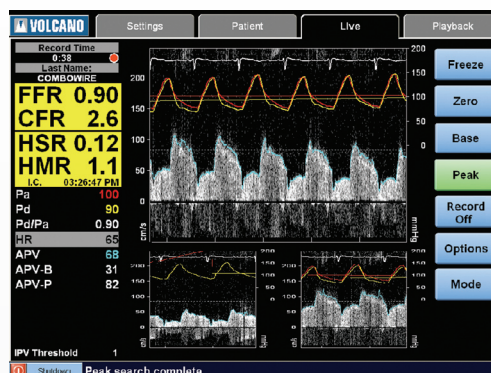
System	<ul style="list-style-type: none">• 15" LCD display• Touch screen user interface and remote control• Multiple image screen formats for flow, pressure, and combination flow/pressure• CD-R/W recordable drive• Thermal printer• Multiple physiological input/output ports (high and low level) plus two USB ports• Digital storage up to two hours on system hard-drive
Input Power	<ul style="list-style-type: none">• 90-130 VAC 50/60 Hz, 1 Amp• 180-260 VAC 50/60 Hz, 0.5 Amp
Operating Range	<ul style="list-style-type: none">• Temperature Range: 60°-90° F• Humidity: 10-90% non-condensing• Altitude: 10,000 ft
Dimensions	<ul style="list-style-type: none">• Computer: 16" (Height), 18" (Width), 8.5" (Depth)• Cart: 33" (Width)
Weight	<ul style="list-style-type: none">• Computer: 30 lbs.• Cart: 60 lbs.



Doppler flow and pressure wire for advanced physiological assessment.

ComboWire is the only choice for combined simultaneous pressure and flow calculations with a design offering high steerability, and great trackability in a high performance angioplasty wire.

- Complete assessment of intravascular hemodynamics
- Simultaneous intravascular pressure and Doppler flow
- Measures FFR and CFR using ComboMap system
- Capable of measuring stenotic and microvascular resistance
- Two sensor configuration options
- XT core wire for improved trackability
- Proximal PTFE coating for improved device deliverability
- Hydrophobic coating distal for improved crossability and smooth tracking



Technical Specifications

Model	Description	Sensor Offset
9500	ComboWire, 0.0 cm offset	Doppler flow and pressure sensors at tip
9515	ComboWire, 1.5 cm offset	Doppler flow at tip, pressure sensor at 1.5 cm

Manufactured by:
 Volcano Corporation
 2870 Kilgore Road
 Rancho Cordova, CA 95670 USA
 800-228-4728 916-638-8812 fax

Authorized European Representative:
 Volcano Europe SA/NV
 Excelsiorlaan 41
 B-1930 Zaventem Belgium
 +32 2 679 1076 +32 2 679 1079 fax

