



Volcano CORE™

Integrated Precision Guidance System

IVUS & FFR On & Ready At Your Fingertips.

Introducing
CORE™
CONTROL PAD

CONTROL FROM THE STERILE FIELD

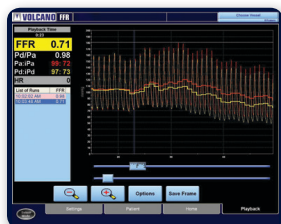
- More **Clarity** by providing command, control, and viewing where you want it
- More **Confidence** by applying enhanced control choices with the IVUS & FFR system market leader
- More **Convenience** through control of direct frame navigation, on-screen measurements, and enhanced labeling tools

The Volcano CORE™ Control Pad is sold separately.

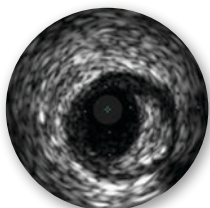


VOLCANO
PRECISION GUIDED THERAPY

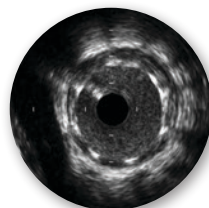
One System, Many Choices...



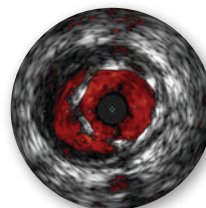
Fractional Flow Reserve
PrimeWire PRESTIGE® PLUS
Pressure Guide Wire



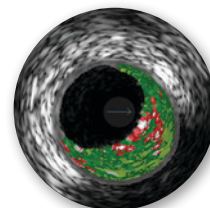
Eagle Eye® Platinum
Digital IVUS Catheters



Revolution® 45 MHz
Rotational IVUS Imaging
Catheter



ChromaFlo® Imaging
Stent Apposition
Assessment



VH® IVUS Imaging
Plaque Composition

*The safety and effectiveness of VH® IVUS for use in the characterization of vascular lesions and tissue types has not been established.

Volcano CORE™

Integrated Precision Guidance System

Workflow Made Easier from the Sterile Field



RECORD



REVIEW



MEASURE



LABEL

Specifications

POWER REQUIREMENTS

System Input	100, 120V, 220, 240VAC, 50/60Hz, 1000VA
Workstation	100 – 240V, 50/60Hz, 825VA
Monitor	100V – 240V 50/60Hz, 39W

DIMENSIONS

Workstation	H=17", W=10", D=16.5"
Control Pad (optional)	H=2.75", W=10.5", D=8.3"
Control Room Controller	H=5", W=15", D=10"
Monitor	H=15"– 19" (depending upon the stand extension), W=15.8", D=9.7"
Connection Box	H=9.85", W=2.95", D=7.75"

PROCESSING AND DATA STORAGE

Processor	1 CPU processor 2.53 GHz, 8 core total, 1366 MHz BUS
Memory	8 GB SD RAM
Hard Drive Capacity	1TB 7200 RPM SATA
Digital Archiving Options	Local, DVD, DICOM Network
DICOM Services Supported	DICOM Worklist Management, DICOM Store

ORDERING INFORMATION

CORE System	CORE01
Control Pad	CPADO1
Bedrail Mount	MNTO1
Monitor Mount	MNTO2

For More Information

Please contact your local Volcano representative or visit www.volcanocorp.com



PRECISION GUIDED THERAPY

Volcano Corporation
Corporate Headquarters
3721 Valley Centre Drive, Suite 500
San Diego, CA 92130 USA
Phone: 800-228-4728
Fax: 858-720-0325

Volcano Corporation
Manufacturing Headquarters
2870 Kilgore Road
Rancho Cordova, CA 95670 USA
Phone: 800-228-4728
Fax: 916-638-8812

Volcano Europe BVBA/SPRL
Europe Headquarters
Excelsiorlaan 41
B-1930 Zaventem Belgium
Phone: +32 2 679 1076
Fax: +32 2 679 1079

For further information about Volcano and its products, please visit www.volcanocorp.com.
Volcano and the Volcano logo, Eagle Eye, VH IVUS, PrimeWire PRESTIGE, ChromaFlo, and Revolution are registered trademarks of Volcano Corporation. Core is a trademark of Volcano Corporation.

600-0000.171/001