

PrimeWire Prestige® PLUS

Pressure Guide Wire

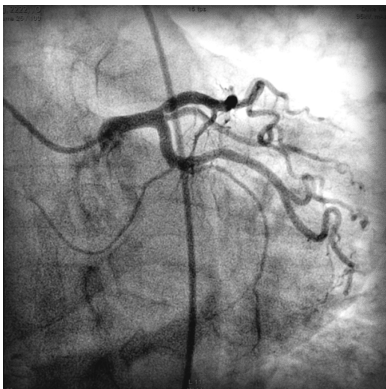
The Prestige PLUS Performance

Successful Navigation in Distal Anatomy and Bifurcations

Best-in-class¹ GlyDx® hydrophilic coating combined with a familiar frontline tip, improved torque response and more support² make the Prestige PLUS guide wire an optimal choice for maneuvering in complex anatomy.

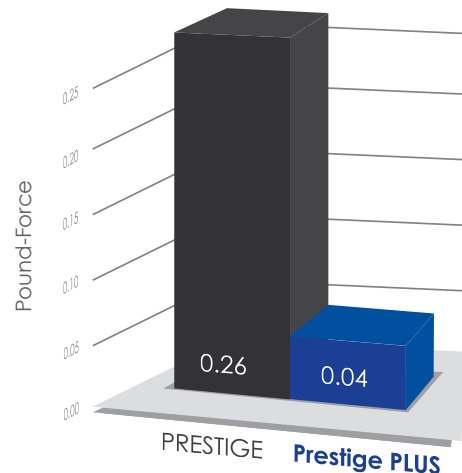
Smooth Device Delivery

Long-lasting GlyDx hydrophilic coating maintains its lubricity through the entire case³, making Prestige PLUS ideal for delivering devices.



Prestige PLUS is designed to reach tortuous anatomy.

Wire Lubricity Porcine Aorta Frictional Test



Prestige PLUS is six times more lubricious than the PRESTIGE® pressure guide wire¹.

Functional Lesion Assessment

Volcano's FFR guidance moves beyond angiography alone for more informed therapeutic decisions. With reliable pressure measurement and intuitive workflow, functional assessment has never been so simple.

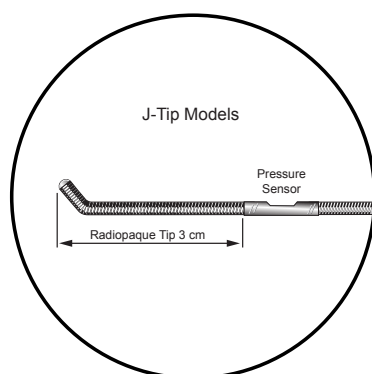


Volcano's FFR Case Manager™ software delivers intuitive workflow.

1 Prestige PLUS is more lubricious than PRESTIGE, data on file at Volcano Corporation.
2 Compared to the PrimeWire® pressure guide wire, data on file at Volcano Corporation.
3 Prestige PLUS lubricity remained unchanged after one hour, data on file at Volcano Corporation.

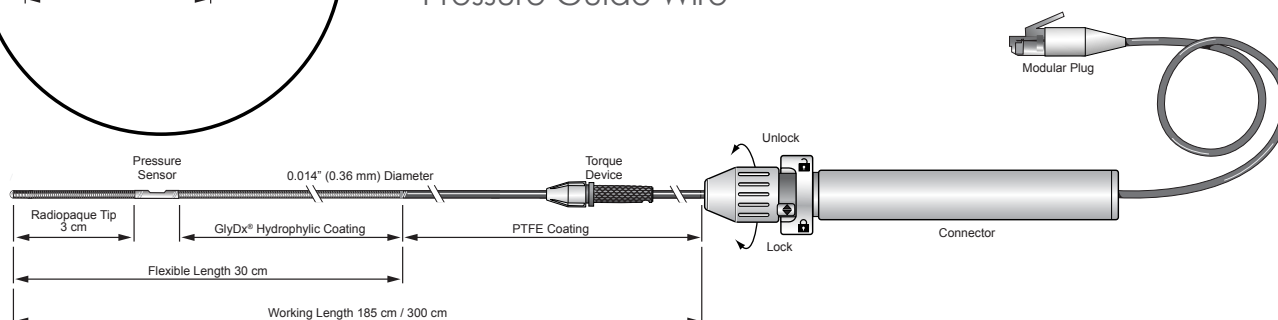
PrimeWire Prestige® PLUS Pressure Guide Wire

Technical Specifications



PrimeWire Prestige® PLUS

Pressure Guide Wire



Model	Description	Length	Tip
9185	PrimeWire Prestige® PLUS Pressure Guide Wire	185 cm	Straight
9185J	PrimeWire Prestige® PLUS Pressure Guide Wire	185 cm	J-tip
9300	PrimeWire Prestige® PLUS Pressure Guide Wire	300 cm	Straight
9300J	PrimeWire Prestige® PLUS Pressure Guide Wire	300 cm	J-tip

CPT® Codes¹

93571-26	FFR and/or CFR of initial coronary vessel
93572-26	FFR and/or CFR of additional coronary vessels

C- Codes²

C1769 Guide Wire

¹ Current Procedural Terminology (CPT) © 2009 American Medical Association. All Rights Reserved.

² C-codes are HCPCS device category codes that are reportable under the Medicare Outpatient Prospective Payment System.



Volcano Corporation
 Corporate Headquarters
 3661 Valley Centre Drive, Suite 200
 San Diego, CA 92130 USA
 Phone: 800-228-4728
 Fax: 858-720-0325

Volcano Corporation
 Manufacturing Headquarters
 2870 Kilgore Road
 Rancho Cordova, CA 95670 USA
 Phone: 800-228-4728
 Fax: 916-638-8812

Volcano Europe SA/NV
 Europe Headquarters
 Excelsiorlaan 41
 B-1930 Zaventem Belgium
 Phone: +32 2 679 1076
 Fax: +32 2 679 1079