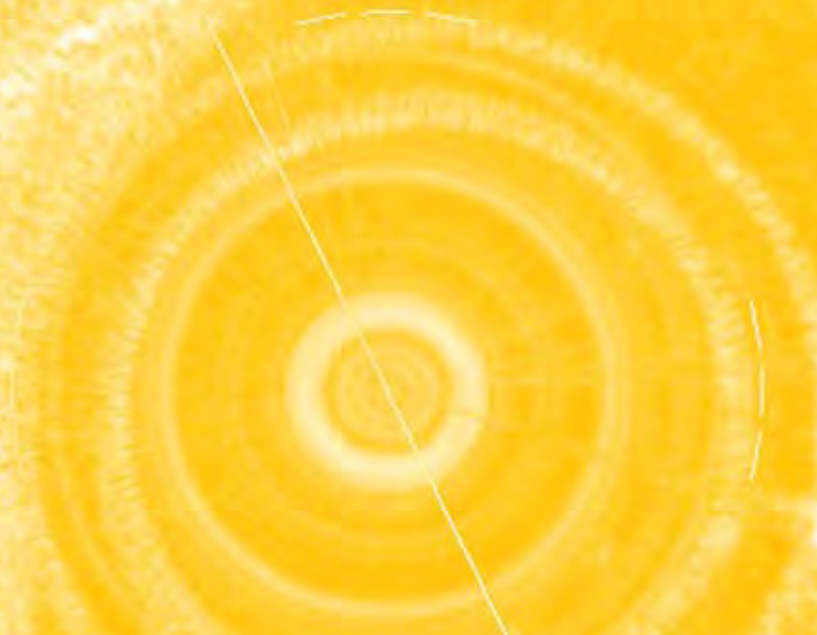
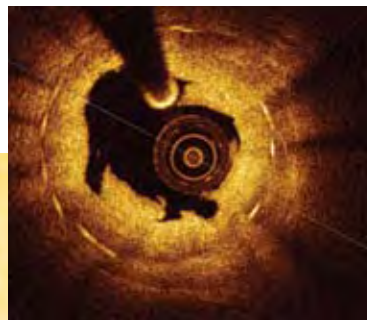


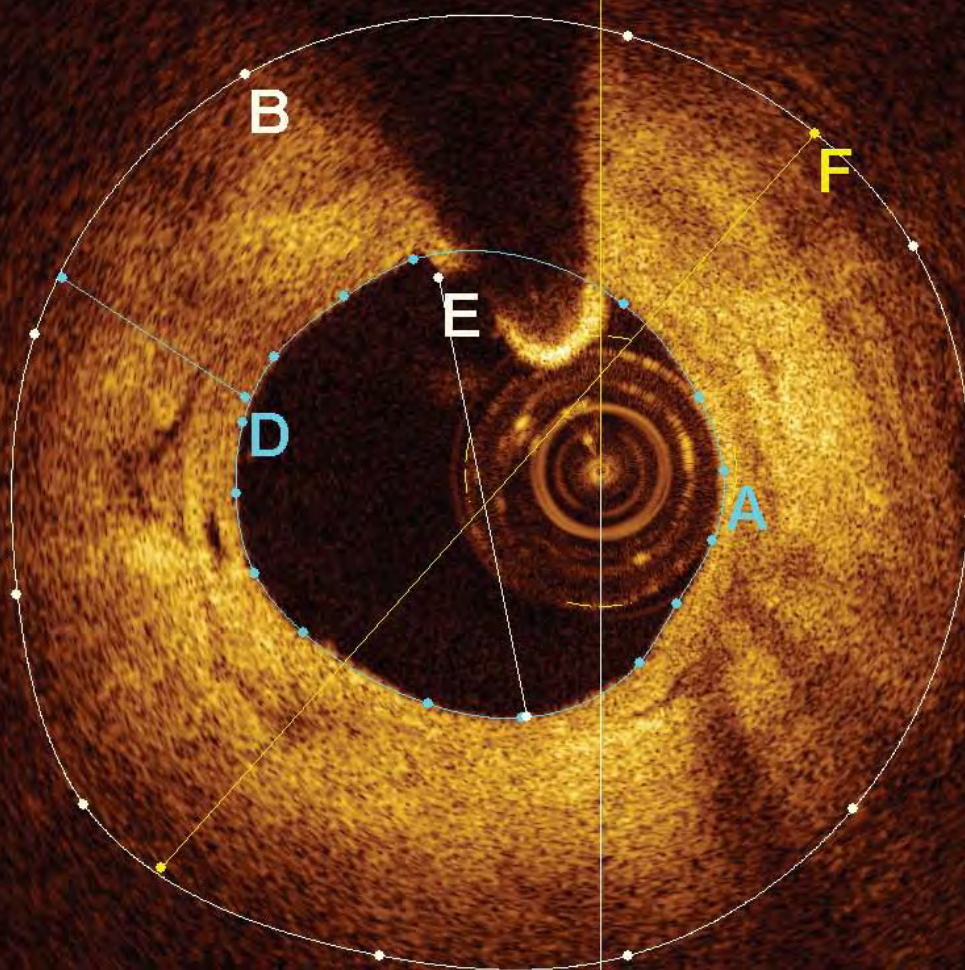
C7™ XR

EXTREME RESOLUTION
INTRAVASCULAR IMAGING SYSTEM

INTRAVASCULAR IMAGING
SIMPLY REDEFINED



With unprecedented ease.



THE GOLDEN IMAGE™

The C7-XR produces golden images that are clear and incredibly detailed, giving interventional cardiologists an unprecedented view of the coronary lumen and its morphology.



The confidence you want.

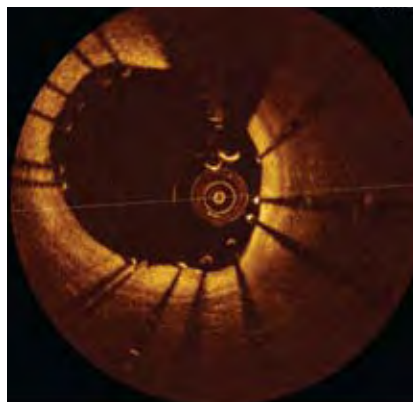
Imagine understanding your patients' coronary condition with a simple imaging procedure that takes only a few seconds.

You don't have to imagine it, because LightLab® has introduced the C7-XR™, the first *extreme resolution* intravascular imaging system for coronary evaluation and diagnosis. Based on industry-leading optical technology pioneered by LightLab, the C7-XR gives cardiologists a powerful new tool for optimizing stent placement, precise characterization of lesion morphology, and a myriad of other clinical capabilities. The C7-XR has simply redefined coronary imaging.

With over ten years of experience in Optical Coherence Tomography (OCT), LightLab continues to provide the brightest ideas in intravascular imaging.

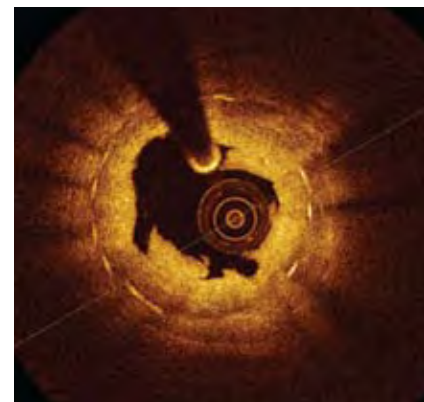
EVALUATE — SAFELY, QUICKLY AND CONFIDENTLY

STENT PLACEMENT



Measure and repair malapposition before it causes complications.

LESION MORPHOLOGY



Complex anatomy is clearly seen and analyzed allowing precision treatment.

FEATURES AND BENEFITS

- **Highly automated procedure is fast and easy for enhanced throughput and productivity.**
- **Extreme resolution displays important information beyond the resolution of IVUS to optimize treatment strategies.**
- **Automated analysis functions improve understanding and simplify complex therapeutic decisions.**
- **Capable of visualizing and measuring a wide range of materials and structures for tailored therapies.**

HOW LIGHTLAB DELIVERS THE “GOLDEN IMAGE”

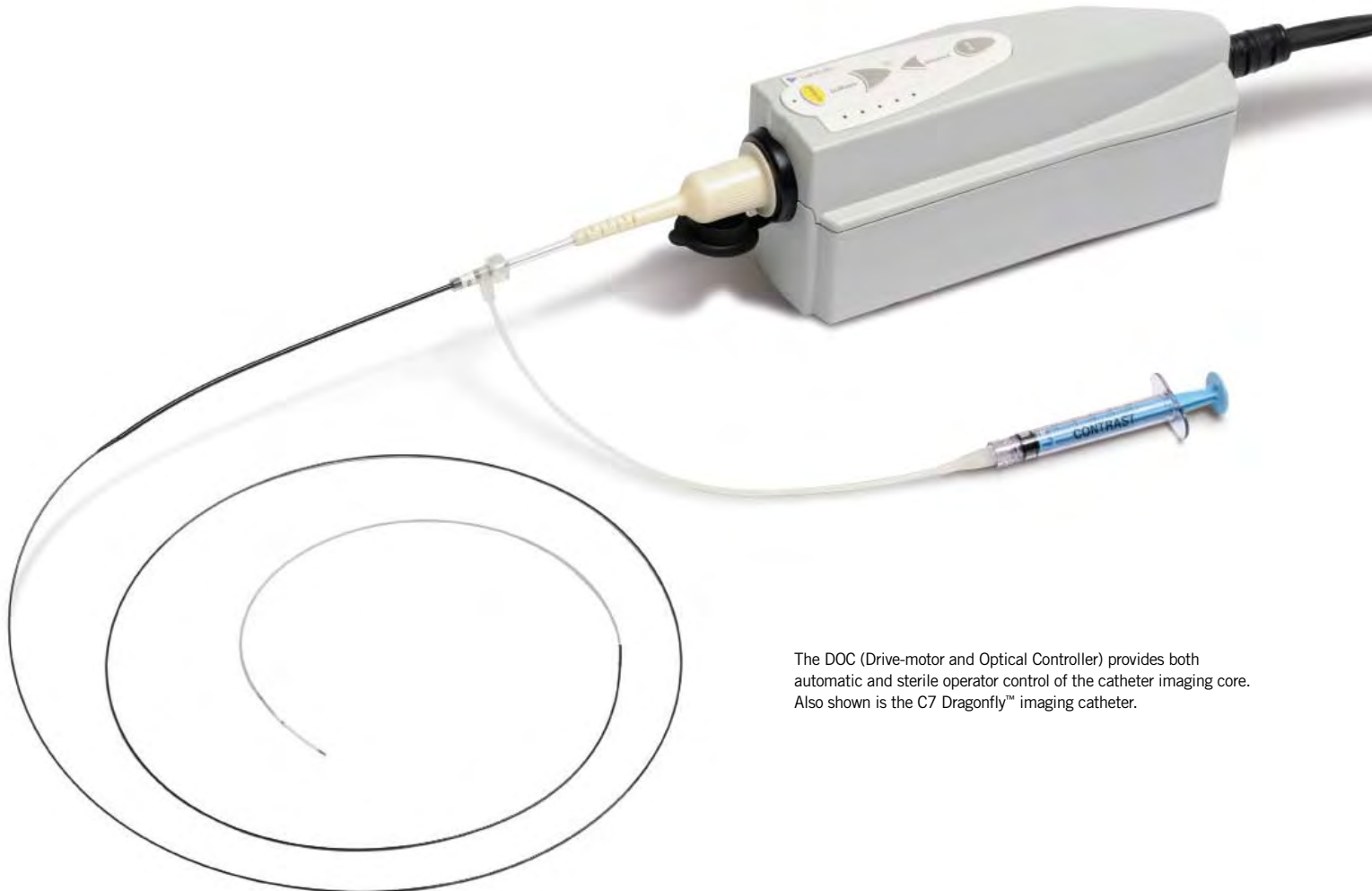
The patented optical imaging catheter utilizes Frequency Domain-Optical Coherence Tomography (FD-OCT™), emitting near-infrared light with a data sampling rate of 100 MB per second to produce real-time, extreme resolution images. And the 100 Hz frequency means little or no blurring from the cardiac cycle (a common problem with ultrasound systems).

CAPTURE THE INFORMATION YOU NEED EASILY AND QUICKLY

The LightLab C7-XR imaging system allows for a fast and simple imaging procedure that takes only seconds. Monorail catheter deployment means no time-consuming exchanges. There are no fussy connections, special tubing or additional accessories needed.

Simply:

1. Start the system and enter patient data.
2. Set up the catheter using automated calibration and automatic connection to the controller.
3. Initiate an automatic imaging pullback with a small contrast injection for precise, hands-free use.



The DOC (Drive-motor and Optical Controller) provides both automatic and sterile operator control of the catheter imaging core. Also shown is the C7 Dragonfly™ imaging catheter.

IMAGE, ANALYZE, DECIDE

Powerful analysis tools give you the information and insights you need to guide treatment strategies and therapeutic decisions.

Multiple automated measurements are available for quick and accurate assessment

Variable-axis lateral view (L Mode) for visualization of the full image length

Multifunction soft keys for easy system management



Zoomed image of malapposed stent struts with measurements. One of many view configuration options.

Cut-plane frame showing relative position of zoomed image

Drag the frame location marker for quick relocation

Multifunction image management toolbar allows quick refinement and selections





EXTREME RESOLUTION INTRAVASCULAR IMAGING SYSTEM



The compact, mobile cart contains all the working elements of the C7-XR imaging system, including:

- C7-XR proprietary imaging engine and custom PC
- Two monitors (17" and 19") plus remote video output for multiple sightlines
- Familiar keyboard or mouse click control of system and catheter
- 22x CD/DVD±RW dual layer DVD-RAM drive for faster image management
- Large hard drive for ample data storage
- HIPAA-compliant security features
- Integrated drive-motor and optical controller (DOC)

C7-XR IMAGING SYSTEM SPECIFICATIONS

SYSTEM DIMENSIONS

Size: 1430 (h) x 471 (w) x 683 (d) mm

IMAGING PARAMETERS

Maximum frame rate:	100 fps
Nominal pullback speed:	20 mm/sec
# of lines per frame:	500
Scan diameter:	10 mm
Axial resolution:	15 μ m

ORDERING INFORMATION

PART NUMBER: 900-700-XX*

To order, call 1-978-399-1055,
fax 978-399-1074,
or email sales@lightlabimaging.com

*Region-specific ISO code



The brightest ideas in intravascular imaging

CAUTION: FDA approval pending.
Not available for sale in the U.S.

LightLab Imaging, Inc.
One Technology Park Drive
Westford, MA 01886 USA
1.978.399.1000
www.lightlabimaging.com

LightLab Imaging, Inc. develops new and innovative technologies that expand the information available to medical professionals for the diagnosis and treatment of intravascular disease. The company's pioneering products, based on Frequency Domain-Optical Coherence Tomography (FD-OCT), utilize standard catheter techniques, making them easy to adopt and use by practitioners worldwide. LightLab Imaging is a Goodman® company.

© Copyright 2009. All rights reserved. LightLab is a registered trademark and C7, C7-XR, C7 Dragonfly, FD-OCT, and The Golden Image are trademarks of LightLab Imaging, Inc. All other trademarks or registered trademarks are the property of their respective owners.

The C7-XR is protected under one or more of the following US patents: 5,321,501; 5,459,570; 5,956,355; 6,160,826; 7,414,779. The catheter is protected under one or more of the following US patents: 5,321,501; 6,134,003; 6,445,939; 6,891,984; 7,241,286; 6,564,087.