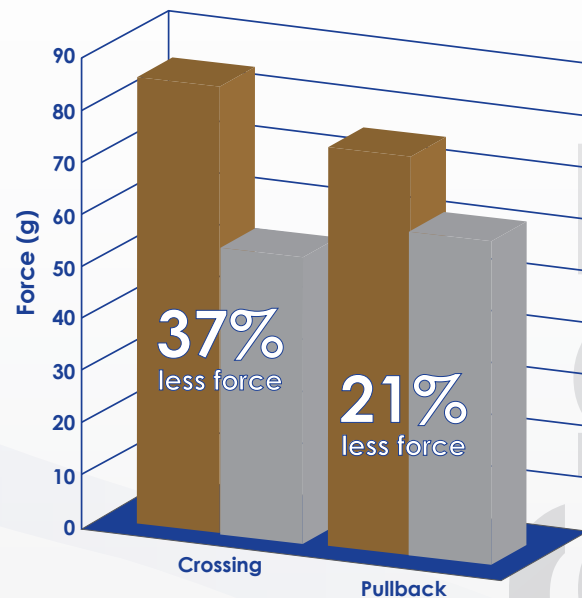


## FAST Plug and Play IVUS is Now EASIER than Ever

### Exceptional Deliverability through Stents and Challenging Lesions

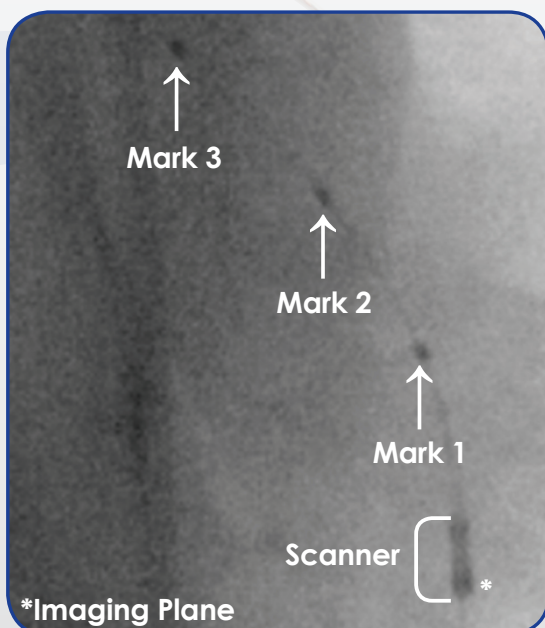
- Soft, tapered tip with very low entry profile
- Smooth, almost transitionless scanner edges
- Fits through all 5F guides<sup>1</sup>
- Lubricious GlyDx™ hydrophilic coating
- Significantly less force to cross and pull back through a simulated lesion<sup>2</sup>



Eagle Eye®  
Gold Catheter



Eagle Eye®  
Platinum Catheter



### Radiopaque Markers for Quick, Convenient Length Estimation

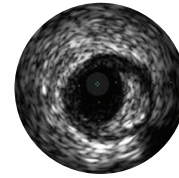
- Three Platinum-Iridium markers not offered by other IVUS catheters
- 10 mm spacing facilitates length estimation without a pullback device or marker wire



# Eagle Eye® Platinum RX Digital IVUS Catheter

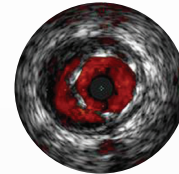
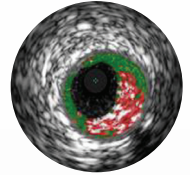
## All the Information Needed to Optimize Your Intervention with all the Advantages of Volcano's Proprietary All Digital Design

- Plug & play simplicity for immediate imaging
- Exclusive offering of three imaging modalities on one catheter
- 20 MHz transducer free of NURD and guide wire artifact allows for accurate assessment of cross-sectional areas and diameters
- Shortest tip to transducer distance facilitates distal imaging
- Long, 24 cm rapid exchange lumen enhances track and push
- 0.014" guide wire compatibility for both coronary and peripheral indications



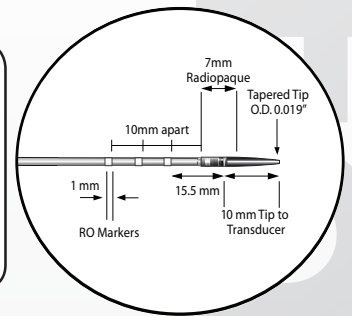
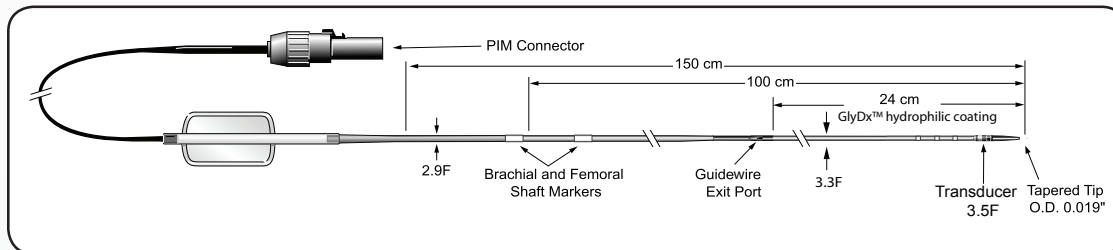
Grayscale helps assess lesion anatomy for accurate stent placement

VH® IVUS imaging classifies plaque into four tissue types to help assess lesion risk



ChromaFlo® imaging makes stent apposition and lumen size instantly recognizable

## EAGLE EYE® PLATINUM RX DIGITAL IVUS CATHETER



### Technical Specifications

Minimum Guide Catheter	Maximum Guide Wire	Maximum Imaging Diameter	Working Length	Frequency
5F (I.D. ≥ .056")	0.014	20 mm	150 cm	20 MHz

Compatible with the Volcano Trak Back® II and R-100 pullback devices.

### Ordering Information

#### Eagle Eye® Platinum Catheter

Catalog Number 85900P

#### CPT Codes - Peripheral

37250	IVUS of initial non-coronary vessel
37251	IVUS of additional non-coronary vessels
75945-26	Radiologic supervision, initial non-coronary vessel
75946-26	Radiologic supervision, additional non-coronary vessels

#### CPT Codes - Coronary

92978-26	IVUS of initial coronary vessel
92979-26	IVUS of additional coronary vessels

#### C-Codes

C1753	Catheter Intravascular Ultrasound
-------	-----------------------------------



#### Volcano Corporation

Corporate Headquarters  
3661 Valley Centre Drive, Suite 200  
San Diego, CA 92130 USA  
Phone: 800-228-4728  
Fax: 858-720-0325

#### Volcano Corporation

Manufacturing Headquarters  
2870 Kilgore Road  
Rancho Cordova, CA 95670 USA  
Phone: 800-228-4728  
Fax: 916-638-8812

#### Volcano Europe SA/NV

Europe Headquarters  
Excelsiorlaan 41  
B-1930 Zaventem Belgium  
Phone: +32 2 679 1076  
Fax: +32 2 679 1079

For further information about VOLCANO and its products, please visit [www.volcanocorp.com](http://www.volcanocorp.com)

Volcano and the Volcano Logo are registered trademarks of Volcano Corporation.

600649-001/002